

WatchPoint

Centralized Monitoring for Distributed Enterprise Networks



Edge to Core Network Analysis



Total Network Visibility

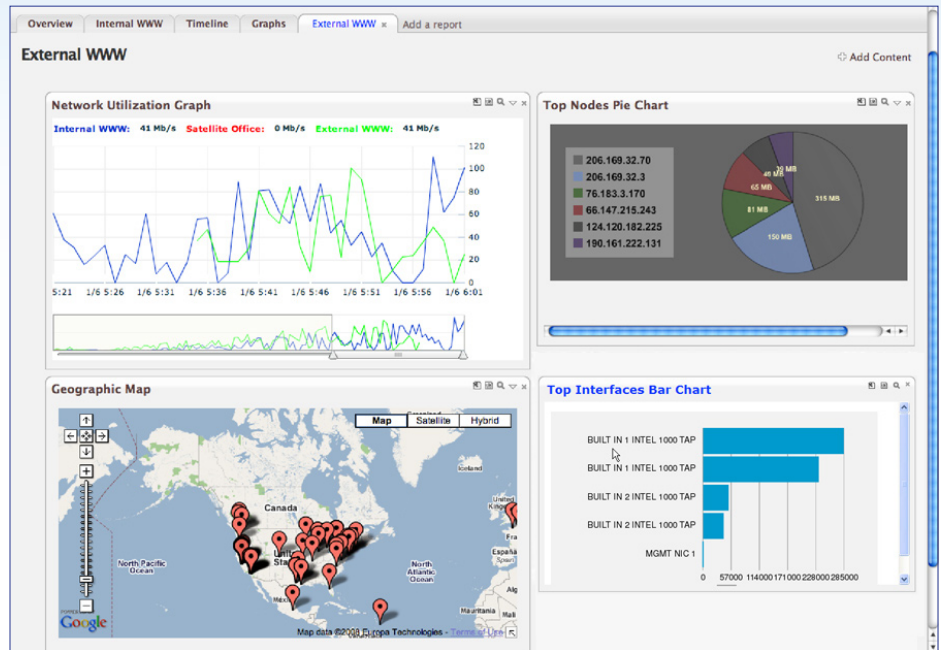


Help Desk Support

WatchPoint:

- Aggregates data from all sources into a single network view
- Supports both IE and Firefox
- Collects and summarizes data from:
 - WildPackets OmniEngines
 - NetFlow-supported devices
 - sFlow-supported devices
- Includes the following analysis gadgets
 - Network Utilization/RangeMap
 - Geographic Map
 - TreeMap
 - Top Ports
 - Top Nodes
 - Top Collectors
- Provides centralized data collector management
- Allows for custom displays for each user

WildPackets®
Illuminate Your Network™



Solution for Help Desk Engineers. Improved visibility, faster problem resolution and scalability at a low cost.

Networks have become highly complex and distributed, making the need for simple, summary-level data that much more important to network engineers and IT managers. WatchPoint addresses these needs with a simple, web-based approach that provides extreme flexibility in data access and data reporting. With WatchPoint, you can aggregate network data from multiple sources anywhere in your network, all in a single, web-based dashboard, freeing you from your desk and eliminating the need for multiple, stand-alone applications.

Monitoring and Reporting of Global Enterprise Networks

WatchPoint brings the data collection and Expert analysis capabilities of the OmniPeek Product Family to an entirely new level by offering unprecedented visibility into network traffic trends and behavior across the entire enterprise. WatchPoint provides 24x7 accessibility and reporting from all WildPackets OmniEngines deployed in the network,

and aggregates data from these distributed OmniEngines for flexible and customizable enterprise-wide reporting. Now you can see your top talkers and top protocols worldwide, or by country, or region or however you would like your report to be structured. WatchPoint leverages the rich statistical data generated by each OmniEngine, raising the bar on traditional flow-based monitoring solutions.

NetFlow and sFlow Support

WatchPoint also supports data collection from all NetFlow and sFlow-based network devices, providing additional information on top talkers and overall network utilization per network node, making WatchPoint the most complete solution for the monitoring and reporting needs of any organization.

Web-based for Immediate Access

As the demand for network services accelerates and IT staffs shrink, it is increasingly important to gain access to critical network data anytime, anywhere.

WatchPoint provides a simple, web-based interface so network engineers and IT staff can access reports from just about anywhere. Away from your desk and paged about an unexpected spike in network traffic? Just get on the network, log into your customized WatchPoint dashboard and view the latest network statistics. If your dashboard isn't currently configured to view data from the offending network segment, simply add a new "gadget" to your dashboard, or reconfigure the parameters of an existing gadget and immediately begin receiving the data you need.

With WatchPoint, Network Engineers and IT Staff Can:

- Monitor the entire network from a single dashboard anywhere there is network connectivity, responding immediately to network trends before they become problems
- Instantly transform WildPackets OmniEngine distributed network analysis deployments into a centrally

managed monitoring solution for distributed enterprise networks

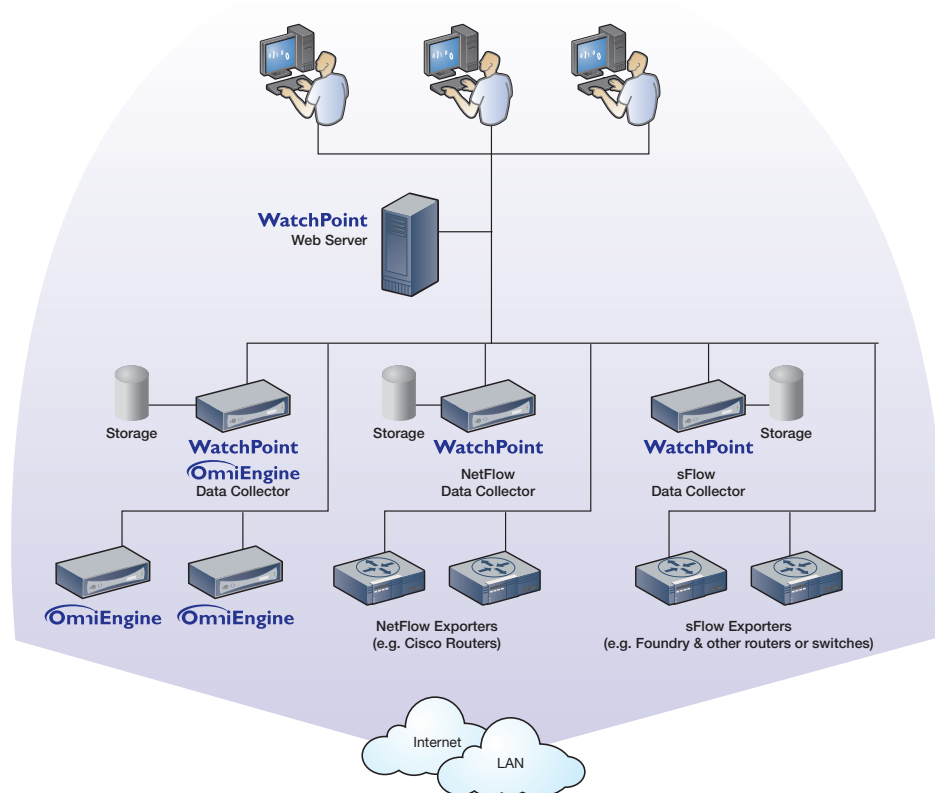
- Extend traditional flow-based network monitoring to include not just statistics but detailed analysis of critical network parameters, including application performance, VoIP performance and Expert event notification
- Find the haystack, then find the needle – perform all levels of network analysis, from global monitoring to detailed analysis of individual IP packets, using a single solution
- Balance cost vs. visibility vs. data access – statistics only from NetFlow and sFlow and complete analysis from WildPackets OmniEngines
- Customize the WatchPoint dashboard for each individual user, giving each user access to exactly the data needed to be effective
- Easily extend the capabilities of WatchPoint with customized gadgets developed against standard technologies (HTML, Javascript, SQL)

WildPackets' solutions enable businesses to

- Gain unprecedented visibility into networks and applications
- Accelerate find-to-fix times
- Discover and close network security gaps
- Increase end user productivity
- Increase ROI on existing networks and applications
- Increase IT efficiency and responsiveness
- Reduce costs associated with network downtime and service degradation
- Reduce IT labor costs

About WildPackets, Inc.

WildPackets, Inc., founded in 1990, develops network and application analysis solutions that enable organizations of all sizes to analyze, troubleshoot, optimize, and secure their wired and wireless networks. WildPackets has amassed more than 6,000 customers and its products are sold in over 60 countries in all industrial sectors. Customers include Safeway, Boeing, Siemens, AT&T, Motorola and over 80% of the Fortune 1000. For further information, please visit www.wildpackets.com.



WatchPoint enables data collection from a variety of sources providing the most complete view of network usage.

Copyright © 2008 WildPackets, Inc. All rights reserved. WildPackets, the WildPackets logo and OmniPeek are registered trademarks and WatchPoint and OmniEngine are trademarks of WildPackets, Inc. All other product names and trademarks are the property of their respective companies.



1340 Treat Blvd, Suite 500
Walnut Creek, CA 94597
(925)937-3200
fax (925)937-3211

www.wildpackets.com